



Audible Signals - Explosion Proof STAINLESS STEEL SOUNDER

Explosion Proof Sounder > Stainless Steel SD125 Series

Product overview

The SD125 electronic sounder range has been approved for use in potentially explosive atmospheres and very harsh environmental conditions.

Typical applications are Oil and Gas, On-shore and Offshore, Chemical, Petrochemical, Refineries & Marine locations etc.

The unit incorporates a three stage alarm option with 60 tones to choose from.

All tones can be pre-set during installation.

The units also have the ability to be fitted with a telephone initiation function and can be used as the second ring output indicator for telephones when installed in very noisy environments.

The design allows for termination inside the enclosure.

The sounder is supplied with a mounting bracket as standard.

Features/Certifications

- Approved by ATEX, IECEx
- CQST (Available on request only)
- ATEX: Ex d IIC T4~ T6 Gb
Ex tb IIIC T135°C~T85°C
- Zones 1, 2, 21 & 22
- Conforms to:
EN 60079-0:2012 (IEC 60079-0:2011)
EN-60079-1:2007 (IEC 60079-1:2007)
EN 60079-31:2009 (IEC 60079-31:2008)
- Volume control
- Dustproof & Weatherproof

SD125 Series > Ordering Information

Follow the chart (right) to generate your part code.

	Voltage	Duty Label	Tag Label	Cable Entry	Finish Colour	Telephone Initiated
SD125 +	DC 12 - 48v	Y = Yes	Y = Yes	A = M20	RD = Red YW = Yellow BU = Blue	Y = Yes
	AC 100 - 240v	N = No	N = No	B = M25	BL = Black OR = Other	N = No

MODEL CONFIGURATOR (By using the table above, complete this box sequence to select your required sounder).

SD125	<input type="text"/>	<input type="text"/>	<input type="text"/>	<input type="text"/>	<input type="text"/>	<input type="text"/>
	Voltage	Duty Label	Tag Label	Cable Entry	Finish Colour	Telephone Initiated

Note: All customers orders will be confirmed in writing. Care should be taken that the correct code has been ordered as be-spoke manufactured products cannot be returned for exchange or credit later.

Kg 6.2

°C -40+70

IP 66

dB 111*

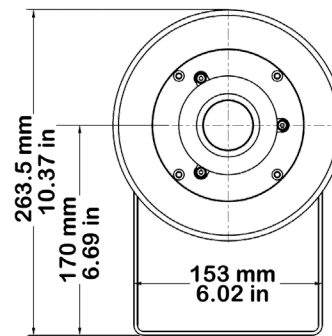
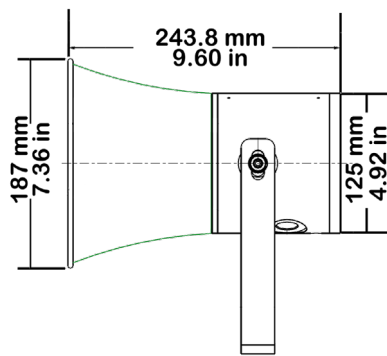
MARINE

INDUSTRIAL

**STAINLESS
STEEL**

APPROVALS and
CONFORMITIES





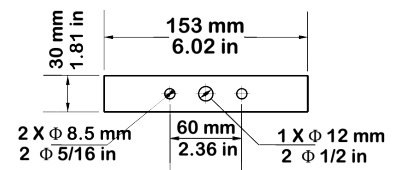
Explosion Proof Sounder > Stainless Steel SD125 Series

General Information

EX CODE:	Ex d IIC T4~ T6 Gb, Ex tb IIIC T135°C~T85°C
CERTIFICATION:	ATEX (Nemko 14 1009X), IECEx (NEM14.005X) CQST (Available on request only)
TYPE:	Electronic Sounder
SOUNDER:	3 Stage alarm with 60 Selectable tones
POWER RATING:	5-20 Watts Adjustable
SOUND OUTPUT:	Up to 111 dB at 1 metre (+/- 3dB) *
AMBIENT TEMPERATURE:	-40 to +70
HUMIDITY:	≤ 95% RH

Mechanical Specifications

MATERIAL:	Enclosure & Bracket: Stainless Steel 316
ENCLOSURE COLOUR:	Red (RAL3001), Yellow (RAL1003) Blue (RAL5005), Black (RAL9004)
WEIGHT:	6.2 Kg / 13.7 lb
DIMENSIONS:	Length: 243.8mm / 9.65" See outline drawing for other dimensions
INGRESS PROTECTION:	IP 66
Electrical Specifications	
POWER SUPPLY:	≤48v Dc or 100-240v Ac (50/60 Hz), ≤20W
TERMINATION:	Accepts upto ≤ 2.5mm ² incorporating rising clamp protectors
CABLE ENTRY:	2 x M20 or M25. For 1/2" or 3/4"NPT requirements, male/female adapter glands are available. Contact sales dept for further part codes.
CURRENT CONSUMPTION:	Sounder 250 mA - 1500 mA (Adjustable by tone selection)



Fixing Holes for
Mounting Bracket

Accessories

50210:	M20 E1EX Stainless Steel Gland (Multi Armour Cone) Atex Cat 2 & 3, EEExde IIC 2 GD Cable ID 11 - 15.5mm OD 14.5 - 21mm Gland for Multi Armoured Cable *
50211:	M20 A2EX Stainless Steel Gland Atex Cat 2 & 3, EEExde IIC 2 GD Cable OD 11 - 15.5mm Gland for Unarmoured Cable *
50212:	M20 E1EX-QS Stainless Steel Gland (Ex d IIC, Ex e IIC, Ex nR IIC, Ex tb IIIC) Cable OD 14.5 - 20.5mm Barrier Gland for Steel and Aluminium Armoured Cable *
50213:	M20 A2EX Quick Stop Stainless Steel Gland (Ex d IIC, Ex nR IIC, Ex tb IIC) Cable OD 9 - 15mm Barrier Gland for Unarmoured Cable *
50214:	M20 Stainless Steel Stopping Plug Atex EEExde I/IIC Standard M20 Blanking Plug
50221:	Epoxy Minute Adhesive 24m/l tube One tube sufficient for five barrier glands

* 15mm Thread length for Stainless Steel products

Note: M25 options available for the above

SD125 Series > Working Current

12v Dc	24v Dc	48v Dc	110v Ac	220v Ac
910 mA (Max 10W)	960 mA	500 mA	210 mA	100 mA