



# Audible & Visual Signals - Explosion Proof GRP SOUNDER/BEACON

## Explosion Proof Sounder/Beacon > GRP SB150-1 Series

### Product overview

The SB150-1 electronic combined sounder beacon range has been approved for use in potentially explosive atmospheres and very harsh environmental conditions.

Typical applications are Oil and Gas, On-shore and Offshore, Chemical, Petrochemical, Refineries & Marine locations etc.

The unit incorporates a three stage alarm option with 60 tones to choose from.

All tones can be pre-set during installation. In addition, the unit also incorporates a visual warning signal with a choice of two types of light source: either xenon (strobe) with multiple flash rates and power ratings or an LED array with three status type indication options.

The units also have the ability to be fitted with a telephone initiation function and can be used as the second ring output indicator for telephones when installed in very noisy environments.

The design allows for termination inside the enclosure. The unit can be bracket mounted only.

### Features/Certifications

- Approved by ATEX, IECEx
- CQST (Available on request only)
- ATEX:Ex d IIC T4~ T6 Gb  
Ex tb IIIC T135°C~T85°C
- Zones 1, 2, 21 & 22
- Conforms to:  
EN 60079-0:2012 (IEC 60079-0:2011),  
EN-60079-1:2007 (IEC 60079-1:2007)  
EN 60079-31:2009 (IEC 60079-31:2008)
- 360° light output around the vertical axis
- Volume control
- Dustproof & Weatherproof

## SB150-1 Series > Ordering Information

Standard Product Selection											
SB150-1											
Lens Colour	Beacon Type	Power (Xenon)	Power (LED)	Voltage	Duty Label	Tag Label	Lens Guard	Cable Entry	Finish Colour	Telephone Initiated	
A = Amber	X = Xenon	02 = 2J	05 = 5W	DC 12 ~ 48v	Y = Yes	Y = Yes	Y = Yes	A = M20	RD = Red	Y = Yes	
R = Red		05 = 5J							YW = Yellow		
B = Blue		10 = 10J							BU = Blue		
G = Green	L = LED	15 = 15J	10 = 10W	AC 100-240v	N = No	N = No	N = No	B = M25	BL = Black	N = No	
C = Clear		20 = 20J							OR = Other		

Follow the chart (right) to generate your part code

Follow the chart (right) to generate your part code.

**MODEL CONFIGURATOR** (By using the table above, complete this box sequence to select your required sounder beacon).

SB150-1											
Lens Colour	Beacon Type	Power (Xenon)	Power (LED)	Voltage	Duty Label	Tag Label	Lens Guard	Cable Entry	Finish Colour	Telephone Initiated	

Note: All customers orders will be confirmed in writing. Care should be taken that the correct code has been ordered as be-spoke manufactured products cannot be returned for exchange or credit later.

Kg 6.5

°C -40+70

IP 66

dB 113\*

MARINE

INDUSTRIAL

GRP

APPROVALS and CONFORMITIES



# Explosion Proof Sounder/Beacon > GRP SB150-1 Series

## General Information

EX CODE:	Ex d IIC T4~ T6 Gb, Ex tb IIIC T135°C~T85°C
CERTIFICATION:	ATEX (Nemko 14 1010X), IECEx (NEM 14.0006X) CQST (Available on request only)
TYPE:	Xenon or LED Audible and Visual Signal Warning Device
SOUNDER:	3 Stage alarm with 60 Selectable tones
POWER RATING:	5-20 Watts Adjustable
SOUND OUTPUT:	Up to 113 dB at 1 metre (+/- 3 dB) *

Xenon Working Status			Xenon - Flashing		
Flash Rate			Selectable from 60-180 Flashes per Minute		
Power Rating	2.5 J (4W) Max	5 J (10W) Max	10 J (15W) Max	15 J (20W) Max	20 J (25W) Max
Effective Candela	67	109	293	395	424

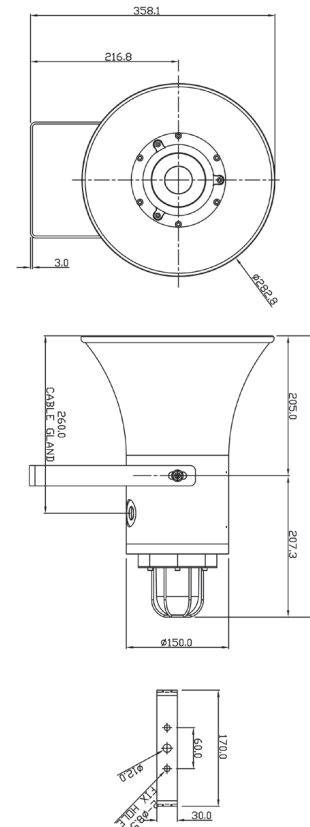
LED Working Status	LED - Flashing / Rotating / Static
Flash Rate	Selectable from 60-120 Flashes per Minute
Rotation Rate	Selectable from 60-120 Revolutions per Minute
Static Mode	Permanently ON (ie Steady)
Power Rating	5 W
Effective Candela	128

### MULTIPLYING FACTOR FOR COLOURED LENSES:

Amber x 0.51, Red x 0.15, Blue x 0.12, Green x 0.49, Clear x 1

### Mechanical Specifications

MATERIAL:	Enclosure: GRP (Glass Reinforced Plastic) Bracket: Stainless Steel 316    Lens: Tempered Glass
LENS COLOURS:	Amber, Red, Blue, Green, Clear or Other (specify)
ENCLOSURE COLOUR:	Red (RAL3001), Yellow (RAL1003) Blue (RAL5005), Black (RAL9004)
AMBIENT TEMPERATURE:	-40 to +70
HUMIDITY:	≤ 95% RH
WEIGHT:	6.5 Kg / 14.3 lb
DIMENSIONS:	Length: 413mm / 16.4" No Lens Guard Fitted See outline drawing for other dimensions
INGRESS PROTECTION:	IP 66
<b>Electrical Specifications</b>	
POWER SUPPLY:	≤48v Dc or 100-240v Ac (50/60 Hz), Beacon: ≤25W, Sounder: ≤20W
TERMINATION:	Accepts upto ≤ 2.5mm <sup>2</sup> incorporating rising clamp protectors
CABLE ENTRY:	2 x M20 or M25. For 1/2" or 3/4"NPT requirements, male/female adapter glands are available. Contact sales dept for further part codes.
CURRENT CONSUMPTION:	Sounder 250 mA - 1500 mA (Adjustable by tone selection)



## Accessories

- 50200: M20 E1EX Nickel Plated Brass Gland (Multi Armour Cone) Atex Cat 2 & 3, EExde IIC 2 GD  
Cable ID 11 - 15.5mm  
OD 14.5 - 21mm  
Gland for Multi Armoured Cable \*
- 50201: M20 A2EX Nickel Plated Brass Gland  
Atex Cat 2 & 3, EExde IIC 2 GD  
Cable OD 11 - 15.5mm  
Gland for Unarmoured Cable \*
- 50202: M20 E1EX-QS Nickel Plated Brass Gland (Ex d IIC, Ex e IIC, Ex nR IIC, Ex tb IIIC)  
Cable OD 14.5 - 20.5mm  
Barrier Gland for Steel and Aluminium Armoured Cable \*
- 50203: M20 A2EX Quick Stop Nickel Plated Brass Gland  
(Ex d IIC, Ex nR IIC, Ex tb IIC)  
Cable OD 9 - 15mm  
Barrier Gland for Unarmoured Cable \*
- 50204: M20 Nickel Plated Brass Stopping Plug  
Atex EExde I/IIC  
Standard M20 Blanking Plug
- 50221: Epoxy Minute Adhesive 24ml tube  
One tube sufficient for five barrier glands

\* 25mm Thread length for GRP products

Note: M25 options available for the above

## SB150-1 Series > Power Consumption & Working Current

**Power Consumption:** Sounder: 5-20W & LED: 5W

**Working Current:** Sounder: 250 mA - 1500 mA & LED: 220 mA (Max)

Xenon	2.5 Joule	5 Joule	10 Joule	15 Joule	20 Joule
	4 W (Max)	10 W (Max)	15 W (Max)	20 W (Max)	25 W (Max)

Xenon	2.5 Joule	5 Joule	10 Joule	15 Joule	20 Joule
	160 mA	320 mA	650 mA	1A (Max)	1.4A (Max)